



Signalization of Blue Island Yard Running Tracks

Fact Sheet

Project Number: B15

Location: Between the control points on either side of Blue Island Yard. Between the intersection of Western Ave. and 140th Street in Blue Island, IL and the intersection of 140th St. and Indiana Ave. in Dolton, IL.

Scope of Work: This project will install a new bi-directional computerized Traffic Control System (TCS) on a three-mile segment of Indiana Harbor Belt mainline track along the north side of Blue Island Yard. This project will provide two new control points, which will include installation of a series of crossovers at CP School Street and a turnout at CP Ashland. Additional crossovers will be added to CP Harvey. The project also includes the installation of electric lock switches and the replacement of approximately five hand-thrown switches with power operated switches. All of this work will be within the existing railroad right-of-way.

Daily Trains Affected:

- Amtrak – 2 Cardinal/Hoosier State trains to Indianapolis
- Freight - Blue Island Yard handles 40 inbound and outbound freight trains per day, and an additional 14 freight trains bypass the yard daily. (CSX, NS, BNSF, Iowa Interstate)

Benefits:

Proposed improvements will increase train speed in the area from 15 mph to 30 mph. With the improvements trains are expected to pass through this segment in as little as six minutes. Trains currently experience 15 to 30 minutes of delay for every hand-operated switch they must navigate as well as when waiting for other trains to navigate the project limits with manual switches. Currently, most trains spend up to one hour to traverse the limits of this project.

Increased freight speeds and improved fluidity on the IHB will allow trains to clear Dolton Interlocking more quickly, reducing the potential for freight conflict with Amtrak and improving travel time, speed, and reliability.

Communities Benefited

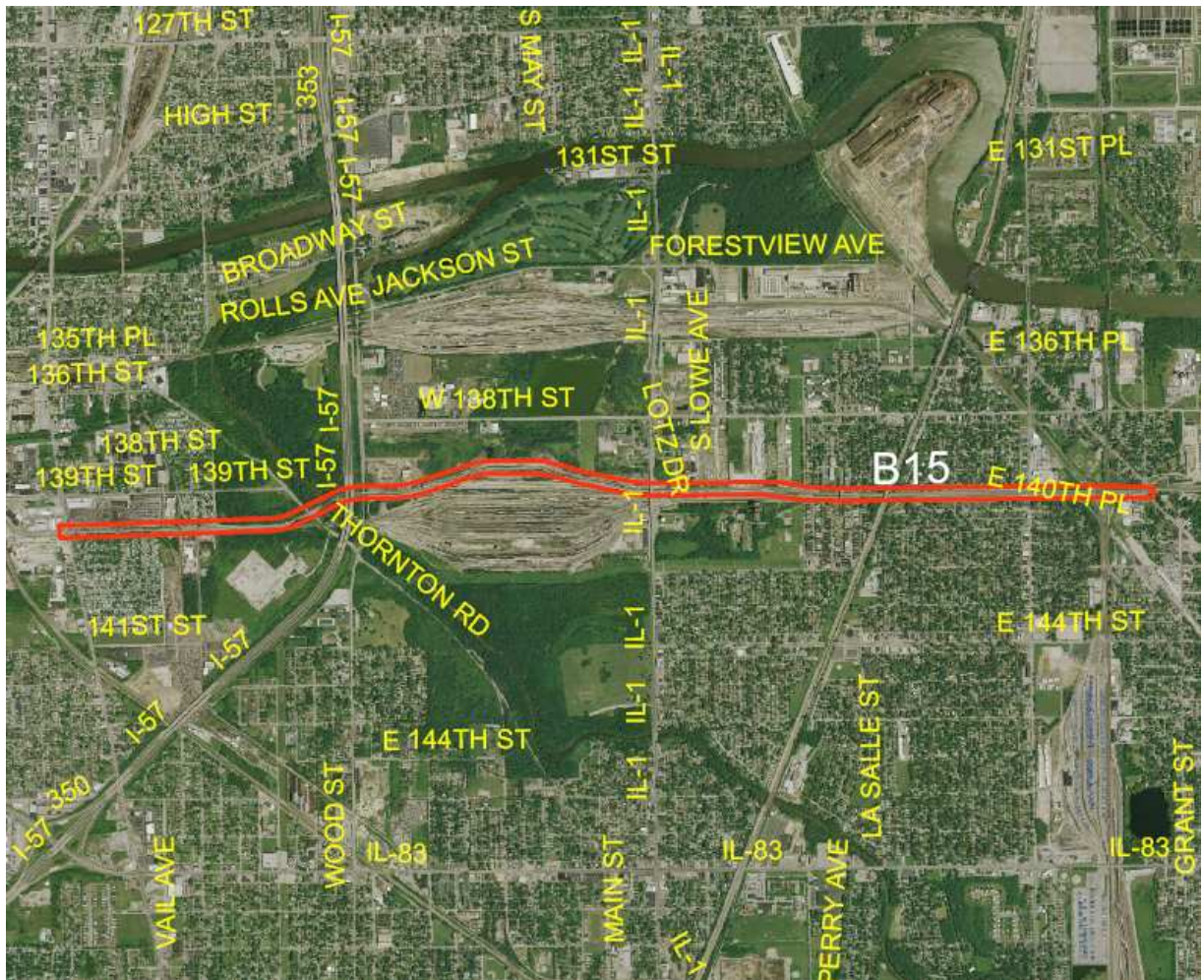
- Blue Island, Riverdale and Dolton, IL

Project Status:

Phase I – NEPA – Preliminary Design (30% Design)	Phase II – Final PS&E*	Phase III - Construction
<i>Underway</i>		

*Plans, Specifications & Estimates

Project Location Map



3/16/10