



CREATE

KEEPING THE GO IN CHICAGO

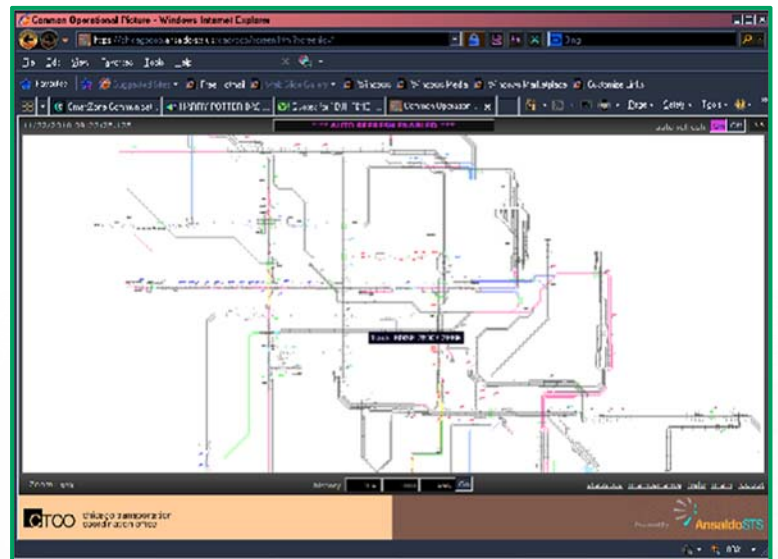
Common Operational Picture

Location

Entire Chicago Rail Terminal District located inside the boundaries of the CN line (former EJ&E) circling the Chicago region and east to Portage, IN.

Scope of Work

Common Operational Picture (COP) is the development of an open interface for integrating information from dispatch systems of all major railroads in the region – tracks, signals, switches, train occupancies, train IDs, etc. – into a single display. COP will benefit the operation of the full Chicago Terminal system. The output of this work will be that all of the Chicago railroads participating in the CREATE Program will have a fully integrated overview display system of all CREATE partner freight and passenger railroads operating in Chicago.



Benefits

The first phase of the project Common Operational Picture – Monitoring Multiple Railroad Operations with an Integrated Track Display and Common Data Protocol – has been completed. Phase I involved development of a prototype multi-railroad dispatch monitoring system for monitoring train movements for four railroads (BNSF, CSX, IHB and UP). Such a system has maximum effectiveness and value when *all* of the railroads are included; Phase II will add the remaining six railroads: Amtrak, BRC, CN, CP, Metra, and NS and extend the display region to include the entire Chicago area. The expected benefit of COP is the ability to identify



congestion and reroute trains as needed and improve travel times. It will benefit operations for all 1,300 daily freight and passenger trains in the region.

Communities Benefited:

- Cook, DuPage, and Will Counties

Project Status

Project Completed May 2015

