



C R E A T E

KEEPING THE GO IN CHICAGO

GS13

31st Street & Indiana Harbor Belt Grade Separation

Location

31st Street
La Grange Park, IL

Daily Trains Affected

76 freight trains

Scope of Work

The project will consider eliminating the at-grade crossing of 31st Street and the three Indiana Harbor Belt (IHB) tracks. This will be accomplished by creating either an overpass or underpass for vehicles at this location.

Benefits

Daily, 17,400 vehicles pass through the crossing. This project will reduce roadway congestion and improve safety at this grade crossing. The grade crossing separation will eliminate delay to nearly 2,100 vehicles daily, resulting in alleviation of almost 16,000 annual motorist hours of delay. It will also eliminate the potential for collisions between vehicles and trains.

Communities Benefited:

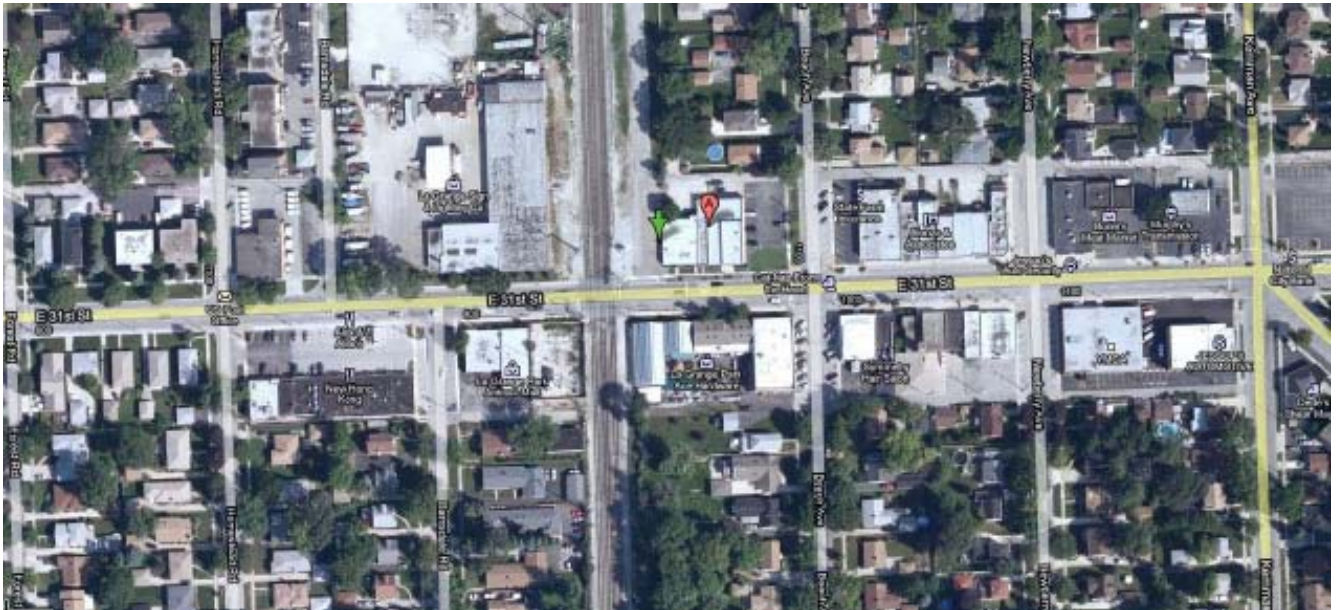
- La Grange Park, IL

Project Status

Phase I – NEPA – Preliminary Design (30% Design)	Phase II – Final Plans, Specifications and Estimates	Phase III - Construction
Pending Funding Availability		



Project Location Map



Existing Condition

6/2018

WARNING
\$250-\$500 FINE FOR ANY
MOTORIST OR PEDESTRIAN