



C R E A T E

KEEPING THE GO IN CHICAGO

GS22

115th Street & Indiana Harbor Belt Grade Separation

Location

115th Street between S. Leamington and Cicero Avenues
Alsip, IL

Daily Trains Affected

80 freight trains

Scope of Work

The project will consider eliminating the at-grade crossing of 115th Street and the two Indiana Harbor Belt Railroad (IHB) tracks. This will be accomplished by creating either an overpass or underpass for vehicles at this location.

Benefits

Daily, 10,000 vehicles pass through the crossing. 115th Street is a primary arterial roadway and this project will reduce roadway congestion and improve safety at this location. The grade crossing separation will eliminate delay to over 1,200 vehicles daily, resulting in alleviation of over 9,600 annual motorist hours of delay. It will also eliminate the potential for collisions between vehicles and trains.

Communities Benefited:

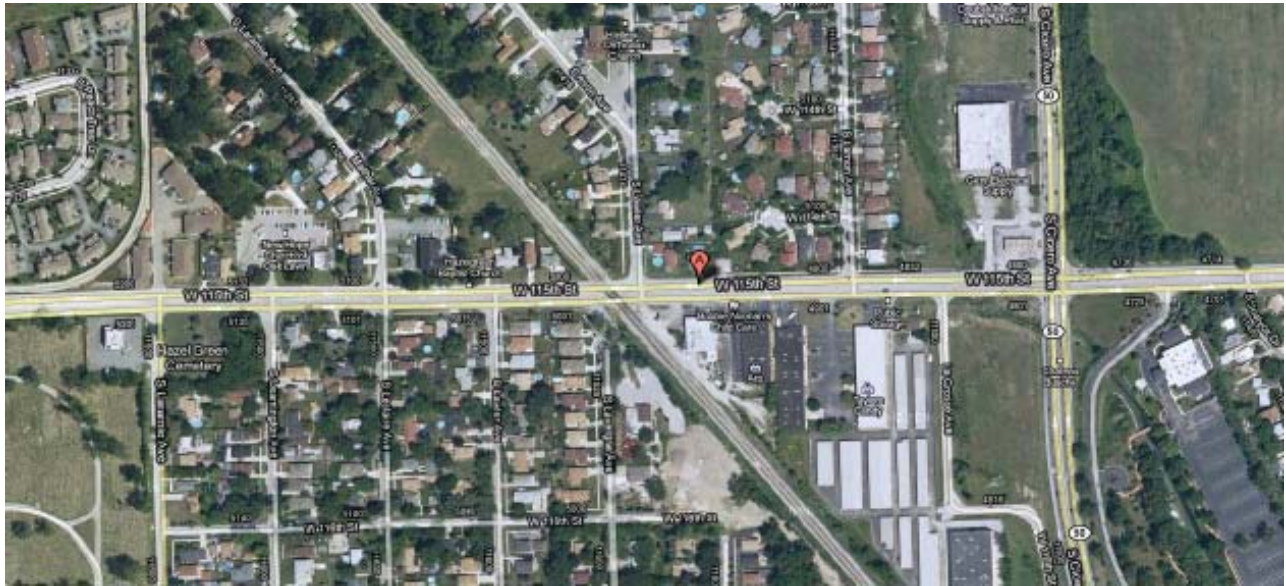
- Alsip, IL

Project Status

Phase I – NEPA – Preliminary Design (30% Design)	Phase II – Final Plans, Specifications and Estimates	Phase III - Construction
Pending Funding Availability		



Project Location Map



Existing Condition

6/2018

WARNING
\$250-\$500 FINE FOR ANY
MOTORIST OR PEDESTRIAN