



## Grade Crossing of NS at Morgan Street

### Fact Sheet

**Project Number:** GS3a

**Location:** Grade crossing of Norfolk Southern at Morgan Street in Chicago (near intersection of Pershing and Morgan).

**Scope of Work:** This project considers a grade separation of Norfolk Southern at Morgan Street in Chicago. The high volume of freight rail traffic results in frequent blockages of this crossing, with traffic backed up on Morgan Street and extending onto Pershing Rd., a major east-west thoroughfare in Chicago. The project will consider as an alternative roadway and signalization improvements at the at-grade crossing, providing warnings and signage that will direct motorists to alternate routes when the crossing is blocked.

**Daily Trains Affected:**

- 36 Norfolk Southern freight trains

**Benefits:**

If a grade crossing is selected, rail and auto conflict will be eliminated. If the alternative of improved roadway design and upgraded signalization is selected, new signage will direct motorists to use alternative routes to bypass a blocked crossing, thereby reducing traffic delays. These improvements will increase the visibility of warning systems to prevent vehicle-rail collisions and improve safety.

Communities Benefited

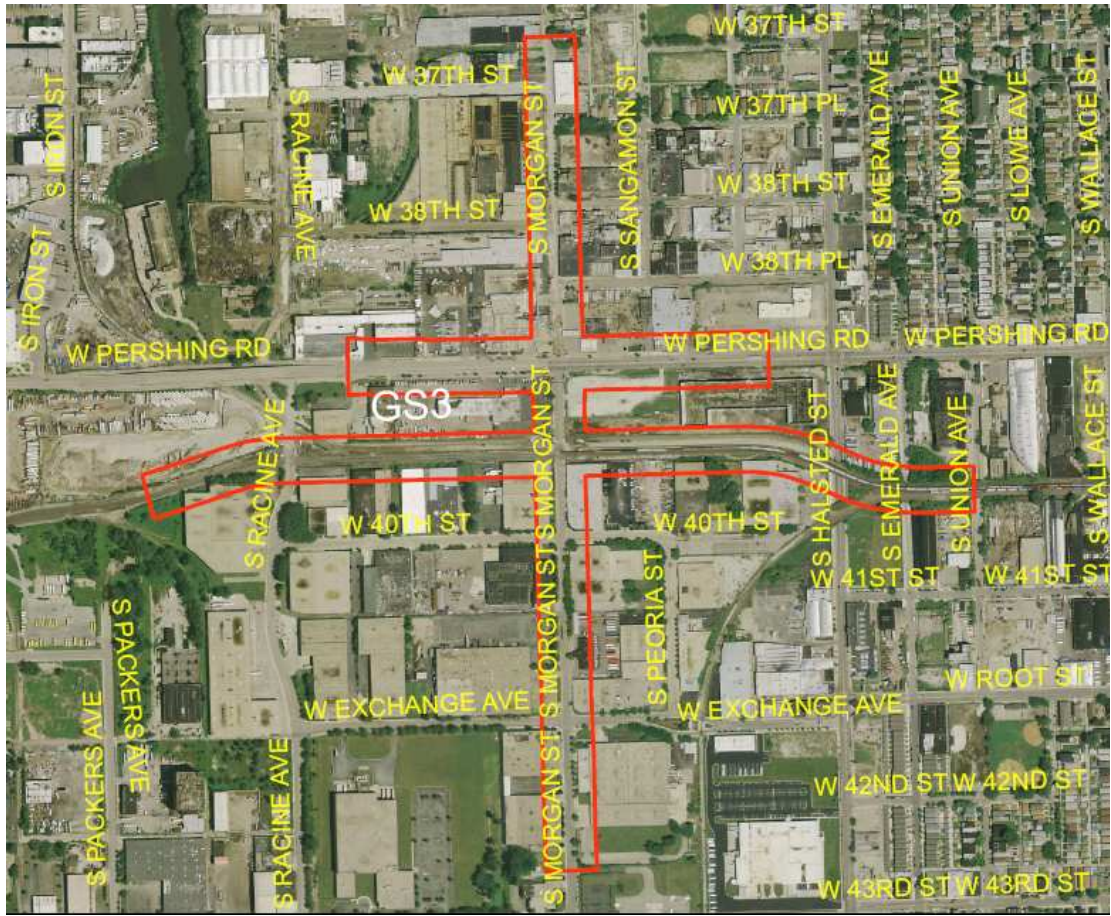
- Chicago Community Areas: McKinley Park, Bridgeport

**Project Status:**

<b>Phase I – NEPA – Preliminary Design (30% Design)</b>	<b>Phase II – Final PS&amp;E*</b>	<b>Phase III - Construction</b>
<i>Underway</i>		

\*Plans, Specifications & Estimates

## Project Location Map



Note: Project limits are approximate