



Dolton Interlocking Upgrade

Project Fact Sheet

Project Number: WA 11

Location: Between 136th in Riverdale and 144th Street, where the CSX, IHB and UP rail lines cross, in Dolton, IL

Scope of Work: Upgrade and reconfigure the CSX/IHB/UP connections at Dolton Interlocking including the replacement of an NS connection between the IHB and CSX. Construct a third main line with direct access from CSX and Barr Yard to the UP mainline. Construct crossovers between two mainline IHB tracks. Upgrade connection between IHB and UP. Automate Dolton Tower for remote control.

Daily Trains Affected:

- 125 freight trains (UP, CSX, IHB, NS, CN)
- 2 Amtrak (Cardinal Service)

Benefits: The project will increase freight train speeds for multiple routes from 15 mph to 30 mph, including routes accessing CSX Barr Yard, UP Yard Center, UP Dolton Intermodal Yard, a CSX mainline route, and all mainline connections between IHB, CSX, and UP. The increased speeds will enable this location to handle increased freight train throughput. Due to increased freight train speeds the potential for delay to Amtrak trains will be reduced.

Communities Benefited:

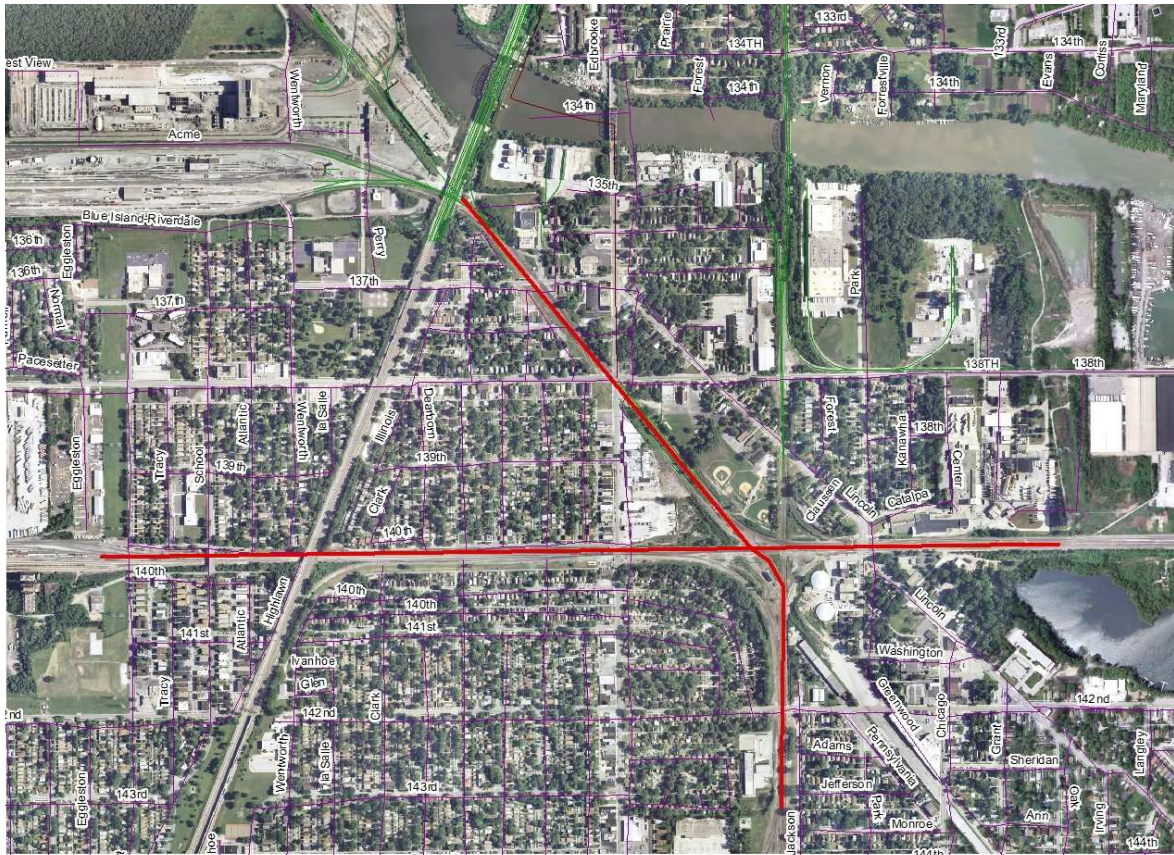
- Dolton and Riverdale

Project Status:

Phase I – NEPA – Preliminary Design (30% Design)	Phase II – Final PS&E*	Phase III - Construction
<i>Underway</i>		

*Plans, Specifications & Estimates

Project Location Map



12/14/10