



Brighton Park Connection Project Fact Sheet

Project Number: WA7

Location: California Avenue and 37th Place to 21st Street and Western Avenue

Scope of Work: Construct new connection from the CN Joliet Subdivision near California Ave. and Archer Ave. to the CREATE Western Avenue Corridor. Also includes construction of an additional track along the Western Avenue Corridor to the 22nd St. Interlocking near 21st Street and Western Avenue. Rehabilitate multiple bridges over city streets and over the Chicago Sanitary and Ship Canal. Install crossover switches between the new track and the CREATE Western Avenue Corridor. Install Centralized Traffic Control signalization over the length of the project.

Daily Trains Affected:

- Expected usage – 10 freight (UP, BNSF, CN, CSX)

Benefits: This new connection between the CN Joliet Subdivision and the CREATE Western Avenue Corridor provides a new east-west route allowing greater flexibility for dispatchers to route trains through the Chicago Terminal. Traffic traveling north from locations such as intermodal facilities in Joliet will be able to proceed more directly to intermodal yards in the city, increasing the potential for steel-wheel interchanges of trains and cargo versus transporting containers via truck using local streets and highways.

Communities Benefited:

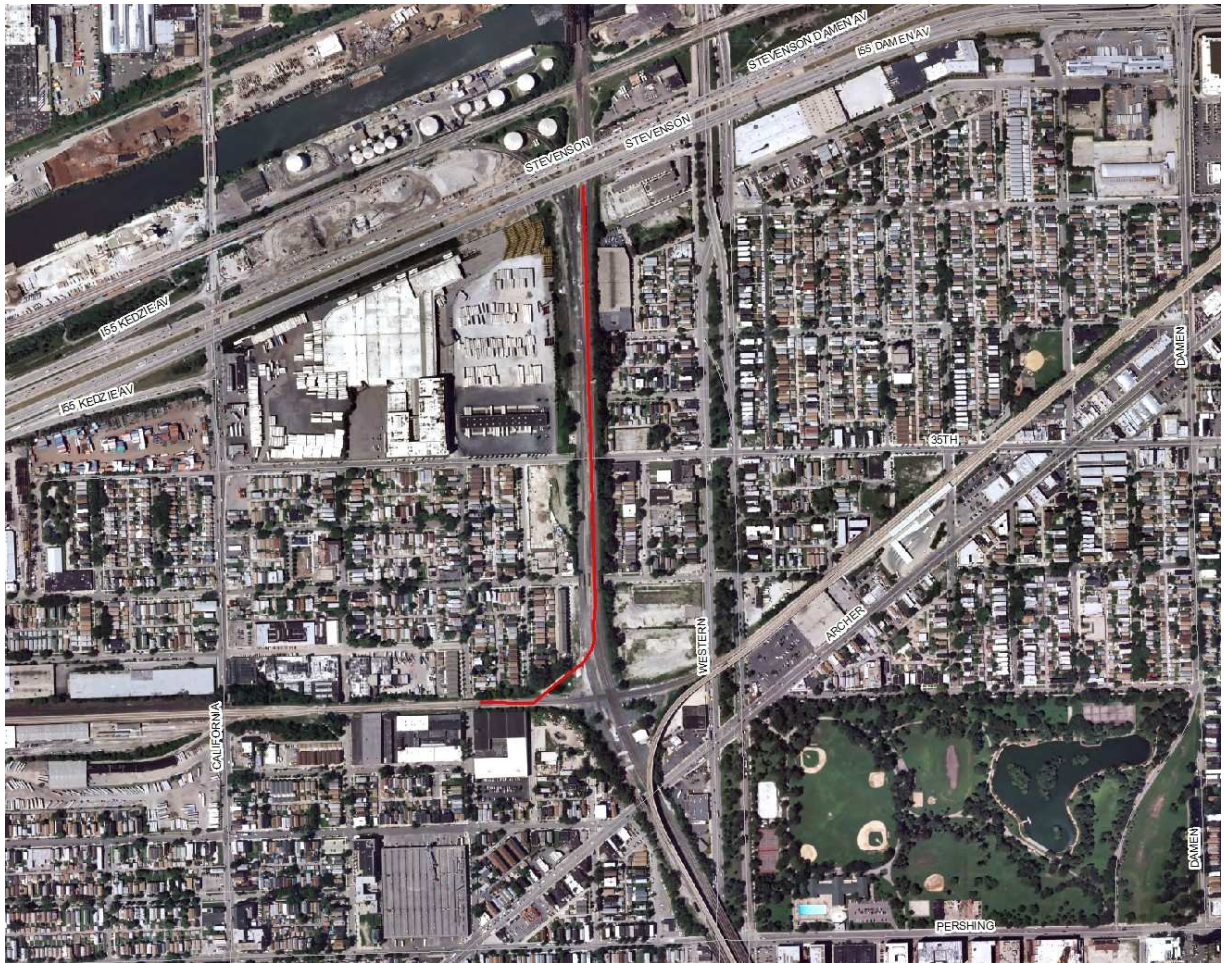
- Chicago Community Areas: Douglas Park, South Lawndale, Little Village, and Brighton Park

Project Status:

Phase I – NEPA – Preliminary Design (30% Design)	Phase II – Final PS&E*	Phase III - Construction
<i>Underway</i>		

*Plans, Specifications & Estimates

Project Location Map



12/14/10